

Customer Helpline
01633 276 868

Tellermate Viewer Registration Guide

The following guide will assist you with product registration and site guide. In order to access Touch Viewer data; your Touch unit must be registered, and it must have a valid license to use.

The Registration is a two-step process:

1. Register through our website using an email address.
2. Register product(s) being used.

Web Registration

To obtain access to data, you must register online at <http://tellermatetouchcloud.com>. Click on **Register** and fill out registration. Required fields are marked with an asterisk (*). Click **Register** when completed.

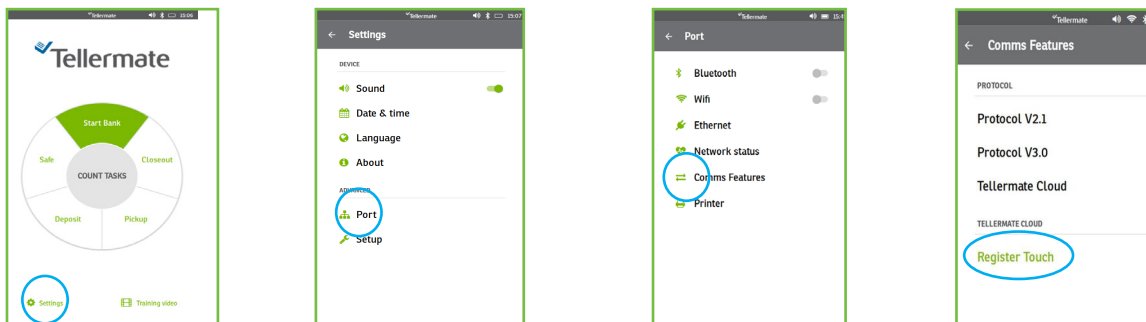
Product Registration

Once your registration is completed, you may register your unit. On the website click on **Register your unit**. The display will prompt for a registration code. The code is located in the Touch unit.

Follow instructions below to obtain the code from your Touch:

You must have the Touch unit connected to the internet for registration. If instructions are needed, please review "How to connect to Wi-Fi" document.

From the Home screen select **Settings, Port, Comms Features**, then **Register Touch**.

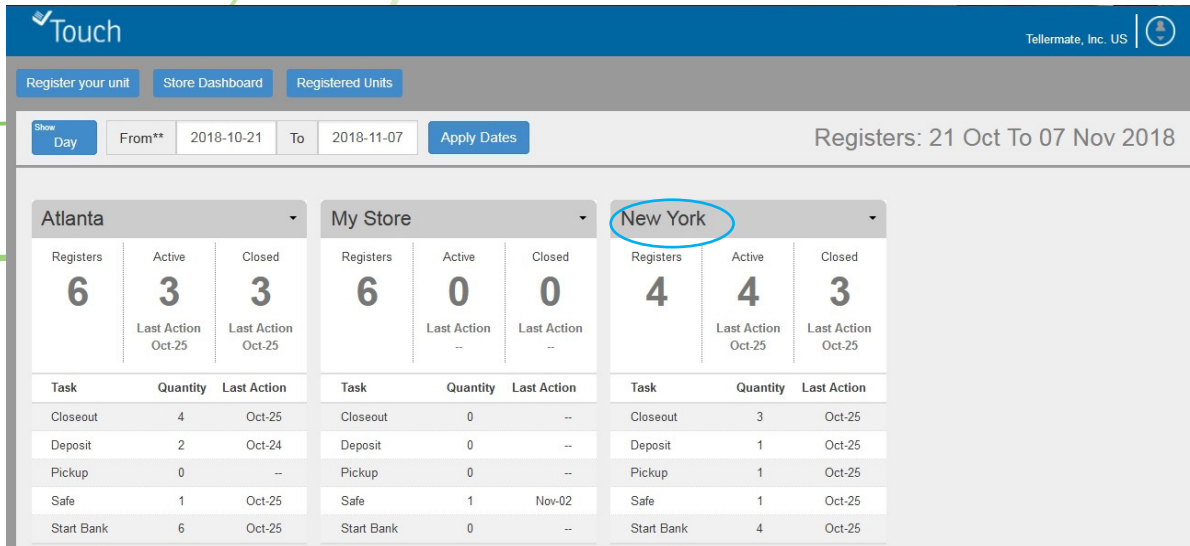


The Touch unit will prompt a unique registration code. Enter the code on the website and click **Register**.

Viewer Guide

Store Dashboard will be the home page. This is where your store information will reside. It is important to ensure settings on the Touch unit are enabled for the best view.

To view store count data select the store name or number.

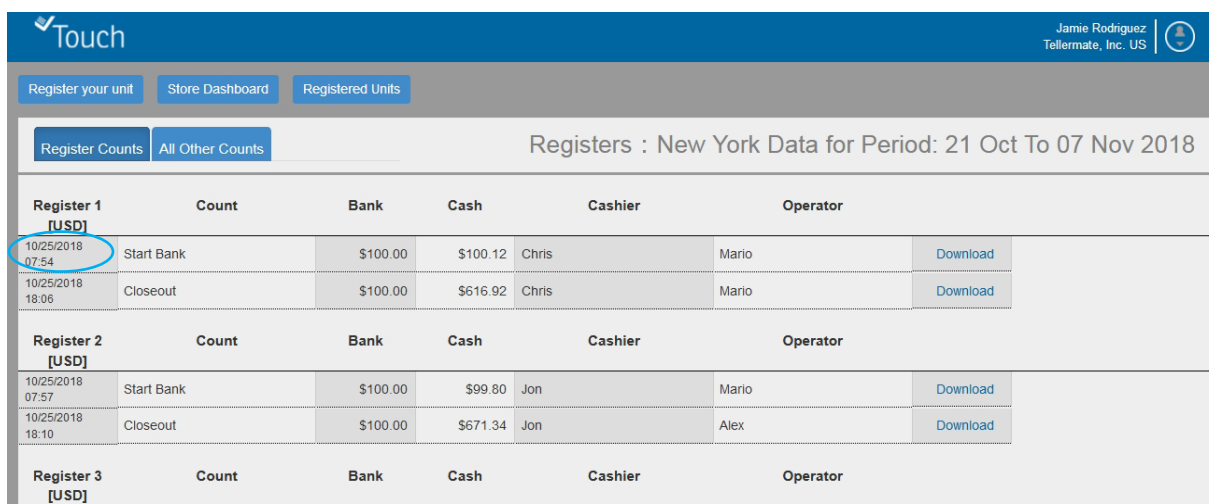


The screenshot shows the 'Store Dashboard' for 'New York'. It displays summary statistics for three registers: Atlanta, My Store, and New York. Each register has columns for Registers, Active, and Closed, along with Last Action dates. Below the summary is a table of tasks with their quantities and last actions.

Register	Registers	Active	Closed	Last Action
Atlanta	6	3	3	Oct-25
My Store	6	0	0	--
New York	4	4	3	Oct-25

Task	Quantity	Last Action
Closeout	4	Oct-25
Deposit	2	Oct-24
Pickup	0	--
Safe	1	Oct-25
Start Bank	6	Oct-25

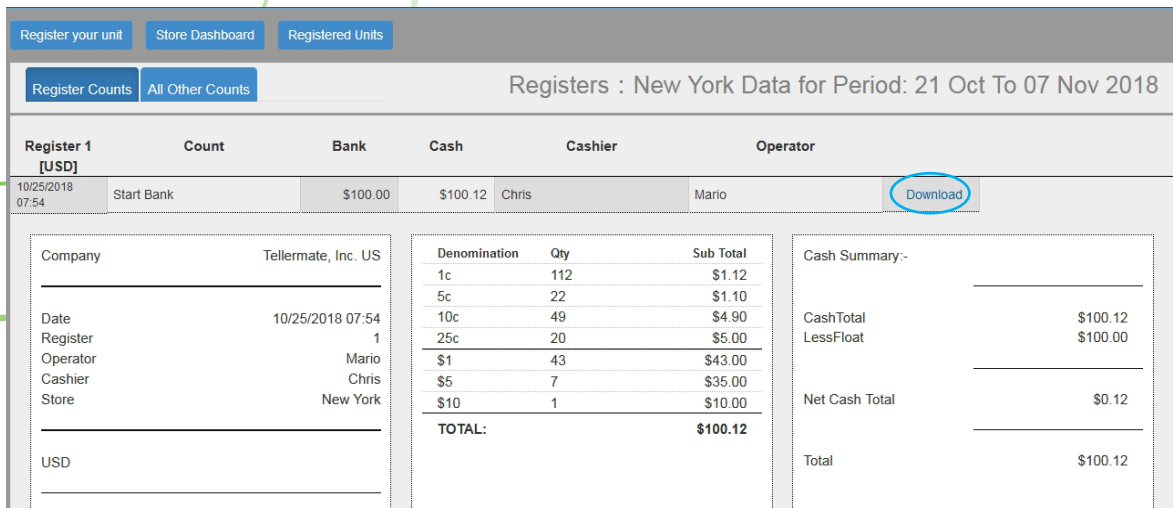
Count data will be shown here. Select a count to display data.



The screenshot shows the 'Register Counts' page for 'New York'. It displays a table of counts for three registers: Register 1, Register 2, and Register 3. Each register has columns for Count, Bank, Cash, Cashier, and Operator. The 'Count' column is circled in blue in the original image.

Register	Count	Bank	Cash	Cashier	Operator
Register 1 [USD]	10/25/2018 07:54	\$100.00	\$100.12	Chris	Mario
	10/25/2018 18:06	\$100.00	\$616.92	Chris	Mario
Register 2 [USD]	10/25/2018 07:57	\$100.00	\$99.80	Jon	Mario
	10/25/2018 18:10	\$100.00	\$671.34	Jon	Alex
Register 3 [USD]					

Count information for selected task will be displayed. Select **Download** to download to text, csv, send to your registered email or to print. Deposit and safe counts will be shown under All Other Counts.



Register 1 [USD]	Count	Bank	Cash	Cashier	Operator	
10/25/2018 07:54	Start Bank	\$100.00	\$100.12	Chris	Mario	Download

Company	Tellermate, Inc. US	Denomination	Qty	Sub Total
Date	10/25/2018 07:54	1c	112	\$1.12
Register	1	5c	22	\$1.10
Operator	Mario	10c	49	\$4.90
Cashier	Chris	25c	20	\$5.00
Store	New York	\$1	43	\$43.00
		\$5	7	\$35.00
		\$10	1	\$10.00
		TOTAL:		\$100.12

Cash Summary -	
CashTotal	\$100.12
LessFloat	\$100.00
Net Cash Total	\$0.12
Total	\$100.12

Reference numbers below are required and must be enabled on the Touch machine. If you have a GEN (Generic) machine these item are already enable. Other versions may require you to enable them manually. Call our helpline for assistance.

- **Store Number** – Set a name/number to your store. If this is not set the store name in the Viewer will default to "My Store".
- **Register** - Only numeric field. If this is not set all data will default to register 0.

For optimal use the following reference numbers are optional but are highly recommended:

- **Operator** - alpha numeric, you may use a name like "John", a number "123", or both "John123"
- **Cashier** - alpha numeric, you may use a name like "John", a number "123", or both "John123"

If you need any help with your Tellermate, please call the Helpline:

01633 276 868